

REFERENCE MARKS

STN	TO	ORIGIN	BEARING	DIST
1	O Screw in M/H	SP219251	279°41'25"	19.344
1	OIP	IS211866	1°10'20"	27.258
2	O Screw Hole in Conc	SP219251	126°25'	3.566
3	OIP (gone)	IS192902	105°56'50"	5.943
3	O Screw hole (gone)	IS192902	142°20'30"	24.947
3	O Screw in Island	IS211866	37°07'20"	42.055
4	OIP	SP219251	272°34'	0.699
5	O Screw in Conc	SP219251	190°23'50"	18.75
6	O Screw in Kerb	SP219251	275°15'30"	6.538
7	O Screw in M/H	SP219251	77°48'	0.849
8	O Screw in M/H	SP219251	4°24'	0.889
9	O Screw in Island	SP219251	190°56'21"	10.103
10	O Screw in Kb	SP219251	180°52'20"	4.301
11	O Screw in Conc	SP219251	103°59'40"	11.379
12	O Screw in Kb	SP219251	287°43'40"	5.553
19	O Screw in Kb	SP219251	302°55'15"	24.82

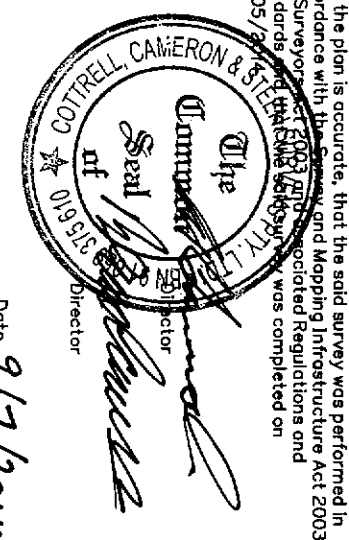
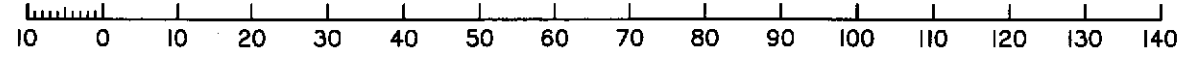
PERMANENT MARKS

PM	ORIGIN	BEARING	DIST	NO
11-OPM	SP219251	154°17'05"	318.836	172566
12-OPM	SP219251	155°43'05"	63.044	165368

Peg placed at all new corners, unless otherwise stated.

Area of New Road
27 m²

Scale 1:1000 - Lengths are in Metres.



COTTELL CAMERON & STEEN SURVEYS PTY LTD (ABN 91 059 375 610) hereby certify that the land comprised in this plan was surveyed by the corporation, by Colin Jay SINDLINGER, surveying associate, for whose work the corporation accepts responsibility, under the supervision of Bruce CAMERON, cadastral surveyor, and that the plan is accurate, that the said survey was performed in accordance with the Survey and Mapping Infrastructure Act 2003 and Survey Regulations 2003 and associated Regulations and Standards and that the plan was completed on 28/05/2014.

Date 9/7/2014

Plan of Lots 57 and 101-122
Cancelling Lots 57 and 158 on SP219251

LOCAL GOVERNMENT: Redland City Council
LOCALITY: Redland Bay

Survey Records: No

Format: **STANDARD**

Scale: 1:1000
State copyright reserved.

Barcode: **SP271161**



DIAGRAM C
1:500

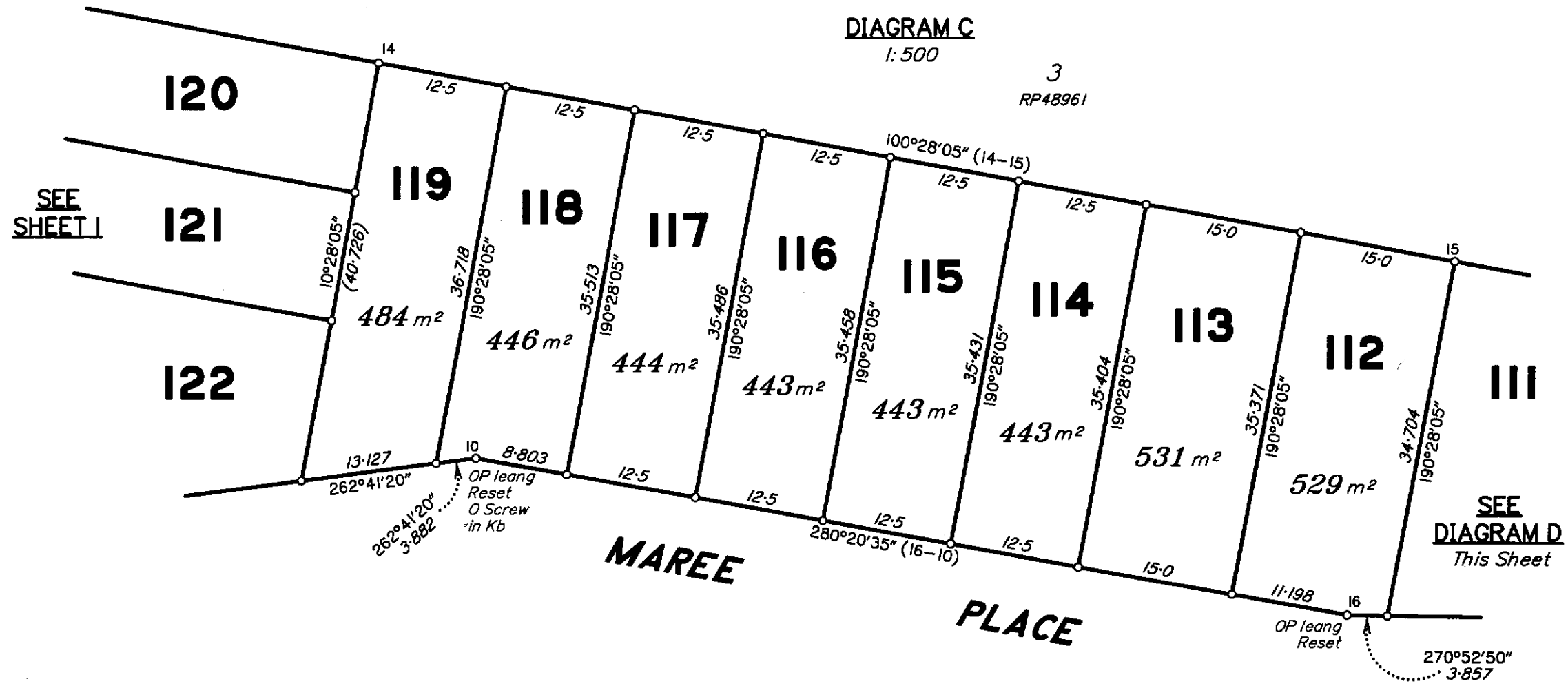
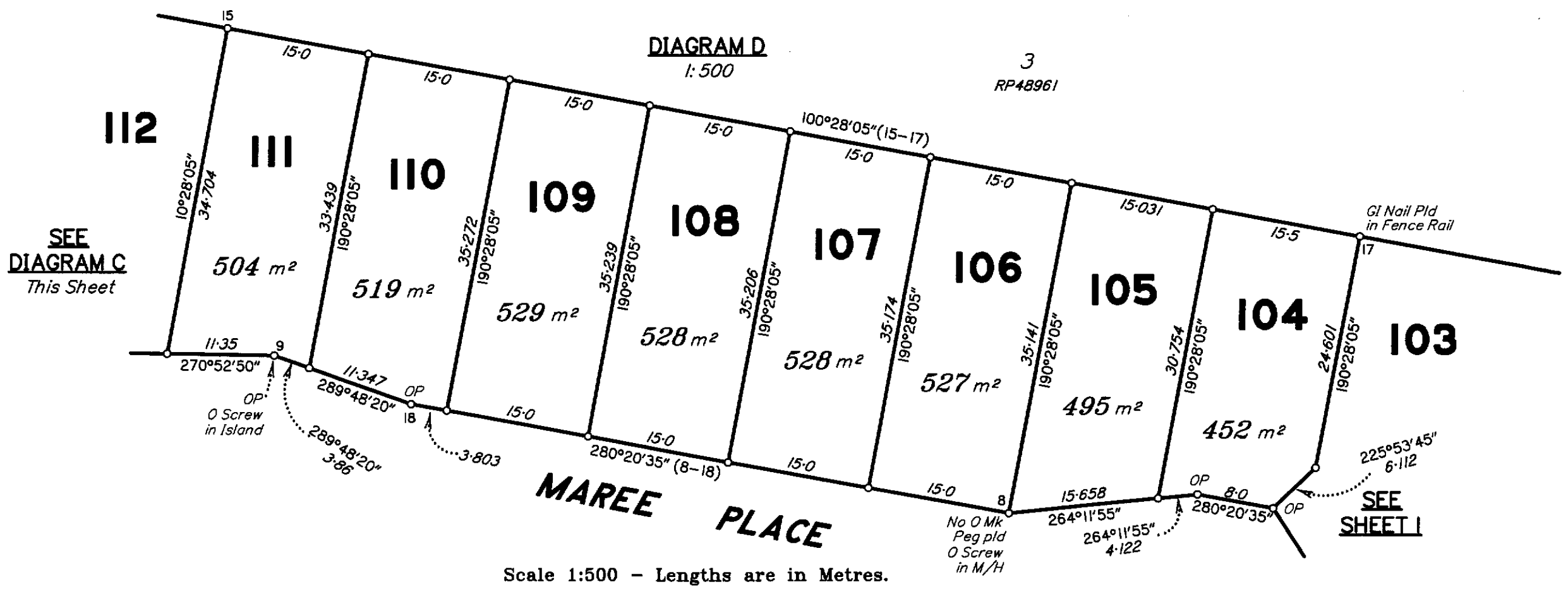


DIAGRAM D
1:500



Scale 1:500 - Lengths are in Metres.

Insert Plan Number
SP271161

State copyright reserved.