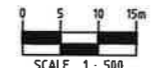
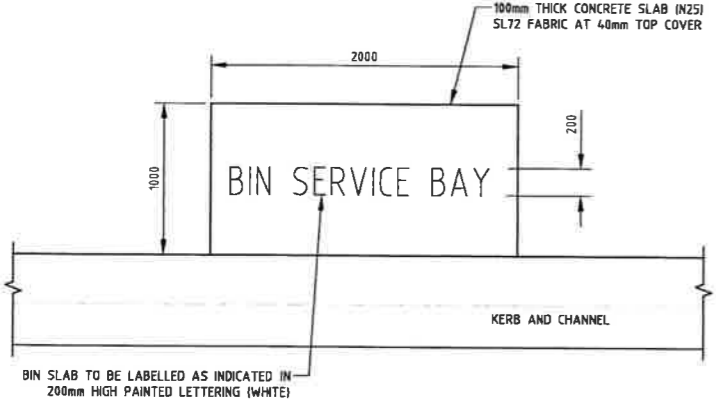


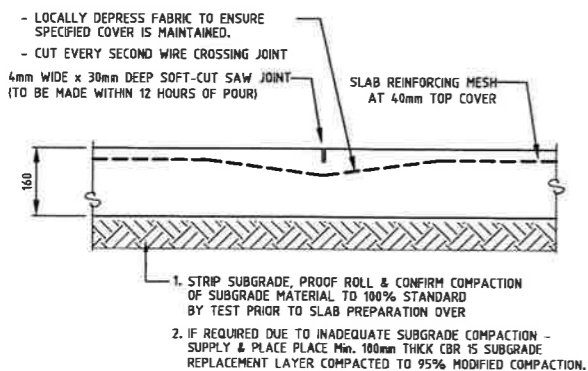
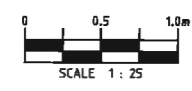
ROADWORKS AND DRAINAGE LAYOUT PLAN



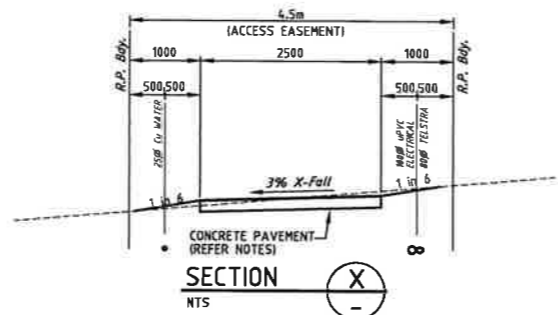
EXISTING SERVICES
 NOTWITHSTANDING THAT EXISTING SERVICES MAY OR MAY NOT BE SHOWN ON THESE DRAWINGS, NO RESPONSIBILITY IS TAKEN BY THE ENGINEER OR THE PRINCIPAL FOR THIS INFORMATION WHICH HAS BEEN SUPPLIED BY OTHERS. THE DETAILS ARE PROVIDED FOR INFORMATION ONLY. THE CONTRACTOR SHALL ASCERTAIN THE POSITION OF ALL UNDERGROUND SERVICES PRIOR TO EXCAVATION AND SHALL BE RESPONSIBLE FOR THE COST OF REPAIRS TO DAMAGES CAUSED AS A RESULT OF THE WORKS.



TYPICAL BIN COLLECTION PAD DETAIL



SAW CUT JOINT DETAIL - 'SCJ'



TYPICAL REAR ACCESS LOT DRIVEWAY DETAIL (APPLICABLE TO LOTS 57 & 103)

NOTES - REAR ACCESS DRIVEWAYS

- IN ADDITION TO THE UTILITY AUTHORITY SERVICE INDICATED THE CONTRACTOR SHALL INSTALL THE FOLLOWING SERVICES / CONDUITS TO EACH LOT SERVICED VIA THE ACCESS DRIVEWAY:-
 - 25Ø (DI) COPPER WATER PIPE (TERMINATED ABOVE GROUND AT END)
 - 100Ø ELECTRICAL CONDUIT
 - 80Ø TELECOMMUNICATIONS CONDUIT
- ALL SERVICES / CONDUITS SHALL EXTEND FROM THE SERVICE POINT AT THE DRIVEWAY FRONTAGE AND EXTEND 2.0m BEYOND DRIVEWAY OR AS INDICATED ON PLANS.
- PROVIDE BRASS MARKERS AND STAKES TO SURFACE AT APPROPRIATE LOCATIONS AND PROVIDE MARKER TAPE IN TRENCH BACKFILL.
- WATER SHALL BE LOCATED ON THE OPPOSITE SIDE OF THE DRIVEWAY TO ELECTRICAL & TELECOMMUNICATIONS CONDUITS. MAINS MAY BE ALTERED TO SUIT SERVICE POINT LOCATION - BUT MINIMUM CLEARANCE IN ACCORDANCE WITH ENERX SPECIFICATIONS MUST BE MAINTAINED.

NOTES:- CONCRETE VEHICULAR PAVEMENTS

- 160mm THICK DRIVEWAY SLAB WITH SL82 FABRIC AT 40mm TOP COVER. N40 CONCRETE STRENGTH. (THICKNESS DOES NOT INCLUDE ANY APPLIED FINISHES).
- REFER TO LANDSCAPE ARCHITECTS DRAWINGS FOR DETAILS OF ANY CONCRETE SLAB APPLIED FINISHES.
- PAVEMENT HAS BEEN DESIGNED FOR PNEUMATIC TYRE MEDIUM RIGID TRUCK LOAD. IF HEAVIER OR ALTERNATE LOADINGS ARE PROPOSED THE PAVEMENT DESIGN MUST BE VERIFIED BY AN ENGINEER.
- WHERE CONCRETE PAVEMENTS ARE SUBJECT TO NORMAL CAR VEHICLE LOADINGS ONLY (i.e. CARPARKING BAYS) SLAB THICKNESS MAY BE REDUCED TO 130mm. VERIFY WITH SUPERINTENDANT.
- JOINTS TO BE INSTALLED AT MAXIMUM 6.0m SPACINGS IN CONCRETE PAVEMENTS
- DIAMOND DOWEL OR EXPANSION JOINTS TO BE LOCATED AT MAXIMUM 18.0m SPACINGS (i.e. EVERY THIRD JOINT) WHERE APPLICABLE.
- ALTERNATE JOINTING SYSTEMS MAY BE ADOPTED ONLY WITH THE APPROVAL OF THE SUPERINTENDANT. THE CONTRACTOR SHALL SUBMIT ANY ALTERNATE DETAILS FOR APPROVAL PRIOR TO COMMENCING ANY CONSTRUCTION.
- THE CONTRACTOR SHALL SUBMIT THE PROPOSED CONCRETE JOINTING LAYOUT PROPOSAL TO THE SUPERINTENDANT AND INSPECTING ENGINEER FOR APPROVAL PRIOR TO CONSTRUCTION OR ORDERING MATERIALS.

WORKS AS CONSTRUCTED

IT IS CERTIFIED THAT WORKS HEREIN HAVE BEEN CONSTRUCTED TO LOCAL GOVERNMENT STANDARDS, RELEVANT APPROVED SPECIFICATIONS AND THE OPERATIONAL WORKS APPROVAL. THE AS-CONSTRUCTED DRAWINGS FOR THESE WORKS CONSTITUTE A TRUE AND CORRECT RECORD OF THE WORKS CONSTRUCTED AND COMPLY WITH THE DESIGN INTENT.

Signature: *Andrew Pezzutti* RPEQ No. 6382
 Date of Practical Completion: 8/8/14
 FOR AND ON BEHALF OF
 LAMBERT & REHBEIN (SEQ) PTY. LTD.

LEGEND

PROPOSED

- PROPOSED VEHICULAR CONCRETE PAVEMENT (REFER ADJACENT DETAILS)
- KERB ADAPTOR (REFER STD DWG R-RSC-7)

LEGEND

EXISTING

- 12.5 SURFACE CONTOUR
- STORMWATER MANHOLE AND GULLY PIT
- W WATER MAIN
- E ELECTRICITY
- T TELSTRA
- G GAS
- KERB ADAPTOR
- KERB AND CHANNEL

Associated Consultants:
COTTRELL CAMERON & STEEN SURVEYS Pty Ltd
 Middle St (Cnr Waterloo St) Phone: (07) 3286 5322
 Cleveland Fax: (07) 3286 2561
 Qld 4163

R.P.D.
 Lot 2 R.P. 98600
 Parish of REDLAND
 County of STANLEY
LEVEL DATUM
 A.H.D. DERIVED
 P.S.M. 97804
 R.L. 11.856

No.	Date	By	Amendment	Checked
C	07.08.14	S.G.	AS CONSTRUCTED	
B	19.12.13	R.T.	FOR APPROVAL	
A	15.10.13	S/JW	ORIGINAL ISSUE	

LAMBERT & REHBEIN
 ENGINEERS • MANAGERS • SCIENTISTS

CBD HOUSE
 LEVEL 3, 120 WICKHAM STREET
 FORTITUDE VALLEY QLD 4006
 P.O. BOX 12 FORTITUDE VALLEY QLD 4006
 A.C.N. 010 451 902

TELEPHONE (07) 3250 9000
 FACSIMILE (07) 3250 9001
 EMAIL mail@lar.net.au

Project: **PROPOSED AFFORDABLE HOUSING 41 BANKSWOOD DRIVE REDLAND BAY - STAGE 4**

Title: **ROADWORKS AND DRAINAGE LAYOUT PLAN**

Client: **Harridan Pty Ltd**

Draftsperson: SJW
 Checked: D.L.
 Designer: SJW
 Approved: A. Pezzutti
 RPEQ No: 6382
 Scale: AS SHOWN
 Date: 18.10.13

Sheet Size: A1
 Drawing No.: B02553-C401

PREVIOUS RCC App. Ref. EC005056.3&4
 CURRENT RCC App. Ref. ROL005650

THIS DESIGN AND DRAWING IS COPYRIGHT. NO PART OF THIS DRAWING MAY BE REPRODUCED, STORED IN A RETRIEVAL SYSTEM OR TRANSMITTED IN ANY FORM WITHOUT THE WRITTEN PERMISSION OF LAMBERT & REHBEIN PTY LTD