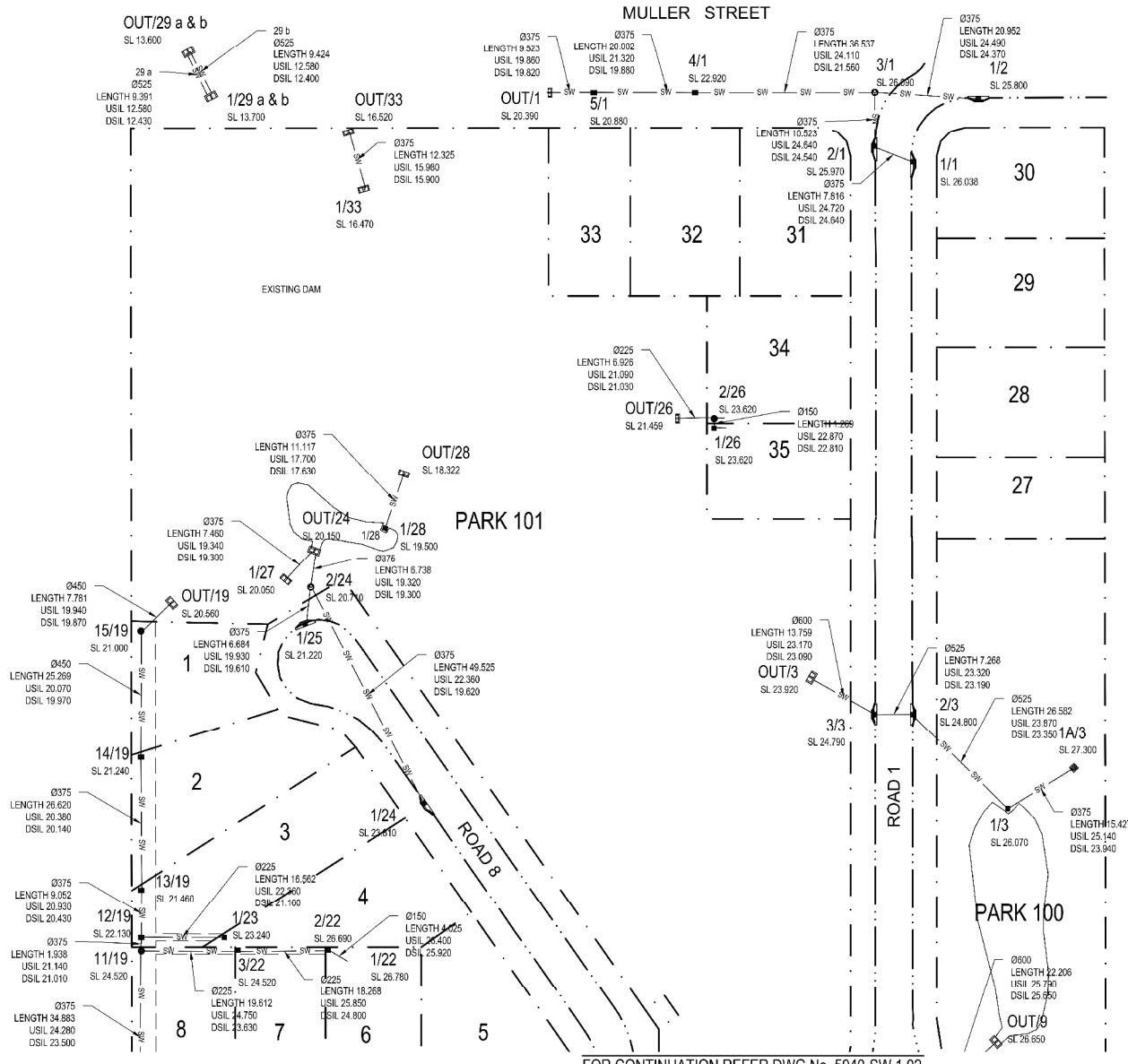
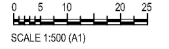


LEGEND	
PROPERTY BOUNDARY	---
KERB AND CHANNEL	---
STORM WATER MAIN	SW --- SW
STORM WATER MANHOLE	SW --- SW
STORM WATER GULLY PIT	SW --- SW
STORM WATER STRUCTURE NUMBER	HW2/22
STORM WATER LINE NUMBER	---



FOR CONTINUATION REFER DWG No. 5940-SW.1.02



**AS CONSTRUCTED DETAILS**

I CERTIFY THAT THE 'AS CONSTRUCTED' DETAILS SHOWN ON THIS PLAN WERE PROVIDED TO MPN CONSULTING BY CCSSURVEYS PTY LTD AS A TRUE AND ACCURATE RECORD OF THE WORKS.

SIGNED *G Jozz* DATE 09.09.15

NAME OF SIGNATORY: GREGG TYQUIN  
RPEQ No. 1529  
MPN CONSULTING PTY LTD

**AS CONSTRUCTED**

I CERTIFY THAT THE 'AS CONSTRUCTED' DETAILS, DIMENSIONS, VERTICAL & HORIZONTAL LOCATIONS ARE A TRUE AND ACCURATE RECORD OF THE 'AS CONSTRUCTED' INFORMATION

SIGNED *Bruce Cameron* DATE 09.09.15

NAME OF SIGNATORY: BRUCE CAMERON  
COTTRELL CAMERON & STEEN SURVEYS PTY LTD

CONSULTANT: MPN CONSULTING PTY LTD  
CONTACT: GREGG TYQUIN (RPEQ 1529)  
TELEPHONE: (07) 3371 6677

*G Jozz* DATE 22.10.14

ISSUE	DATE	AMENDMENT	BY	APP
1	09.09.15	AS CONSTRUCTED ISSUE	ES	SS

46 - 48  
MULLER STREET  
REDLAND BAY

FOR: HARRIDAN PTY. LTD.

**AS CONSTRUCTED STORMWATER DRAINAGE PLAN SHEET 1**

**mpn consulting**

MPN Consulting Pty Ltd  
ABN: 59 006 181 700  
39 Sherwood Road, Toowoomba, Qld 4308  
P: 61 7 3371 6677  
F: 61 7 3371 6196  
E: sales@mpnconsult.com.au

**5940**

DRAWING NO. **SW.1.01** REV. **1**

**AS CONSTRUCTED**

REDLAND CITY COUNCIL REFERENCE No. OPW001252

COPYRIGHT: THIS DESIGN AND PLANS ARE NOT TO BE REPRODUCED WHOLLY OR IN PART WITHOUT THE WRITTEN PERMISSION OF MPN CONSULTING PTY LIMITED 2014

FOR CONTINUATION REFER DWG No. 5940-SW.1.01

**LEGEND**

PROPERTY BOUNDARY - - - - -

KERB AND CHANNEL - - - - -

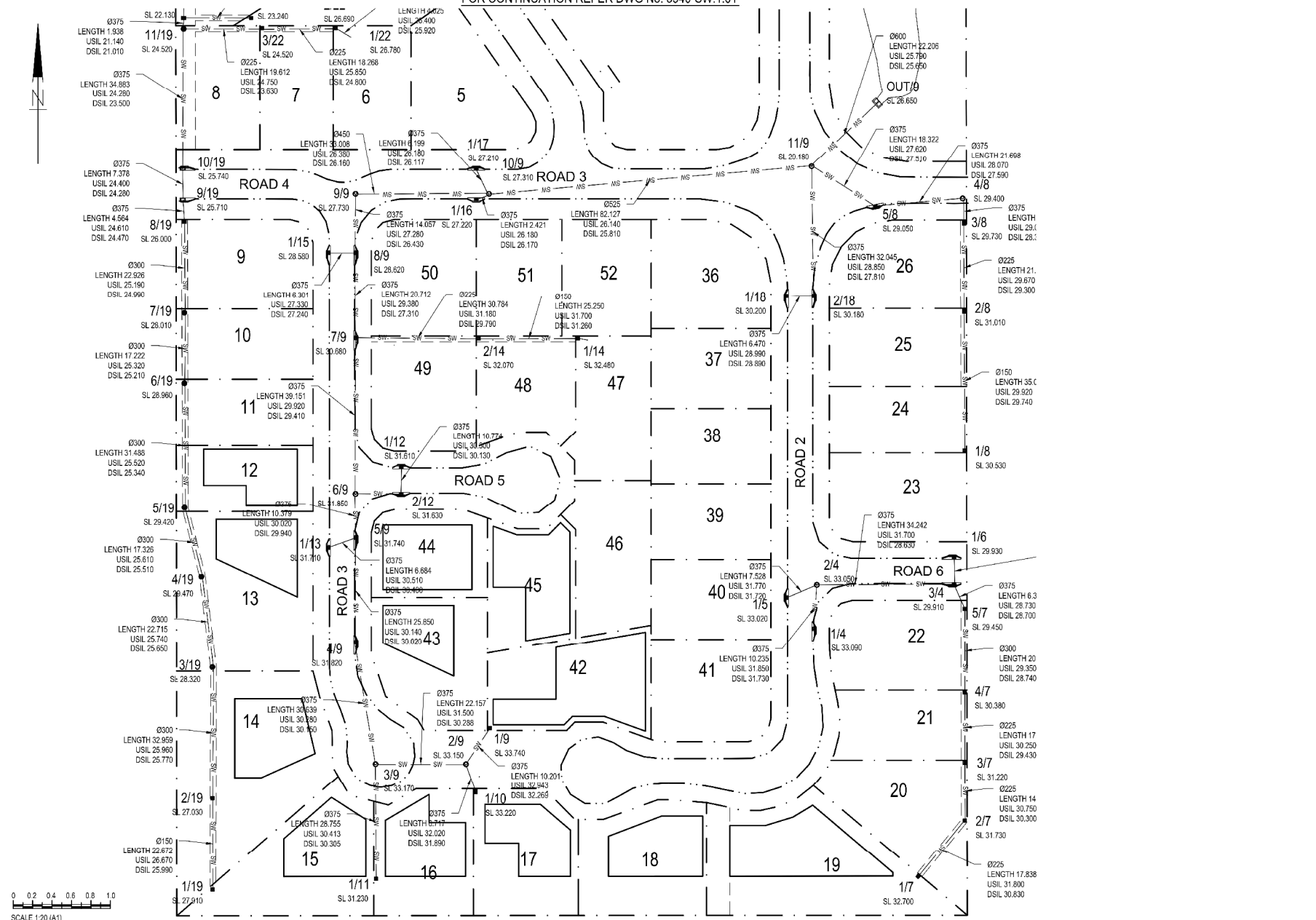
STORM WATER MAIN - SW - SW

STORM WATER MANHOLE - SW - SW

STORM WATER GULLY PIT - SW - SW

STORM WATER STRUCTURE NUMBER - HW2/22

STORM WATER LINE NUMBER - HW2/22



**AS CONSTRUCTED DETAILS**

I CERTIFY THAT THE 'AS CONSTRUCTED' DETAILS SHOWN ON THIS PLAN WERE PROVIDED TO MPN CONSULTING BY CCSSURVEYS PTY LTD AS A TRUE AND ACCURATE RECORD OF THE WORKS.

SIGNED *G Jyz* DATE 09.09.15

NAME OF SIGNATORY: GREGG TYQUIN  
RPEQ No. 1529  
MPN CONSULTING PTY LTD

**AS CONSTRUCTED**

I CERTIFY THAT THE 'AS CONSTRUCTED' DETAILS, DIMENSIONS, VERTICAL & HORIZONTAL LOCATIONS ARE A TRUE AND ACCURATE RECORD OF THE 'AS CONSTRUCTED' INFORMATION

SIGNED *Bruce Cameron* DATE 09.09.15

NAME OF SIGNATORY: BRUCE CAMERON  
COTTRELL CAMERON & STEEN SURVEYS PTY LTD

CONSULTANT: MPN CONSULTING PTY LTD  
CONTACT: GREGG TYQUIN (RPEQ 1529)  
TELEPHONE: (07) 3371 6677

*G Jyz* DATE 22.10.14

**46 - 48  
MULLER STREET  
REDLAND BAY**

ISSUE	DATE	AMENDMENT	BY	APP
1	09.09.15	AS CONSTRUCTED ISSUE	ES	SS

DRAWN	AS DRGWN
CHECKED	
CREATED	
DATE	

FOR: **HARRIDAN PTY. LTD.**

**AS CONSTRUCTED STORMWATER DRAINAGE PLAN SHEET 2**

**mpn consulting**

MPN Consulting Pty Ltd  
409/5000 151 700  
59 Sherwood Road, Toombul, Qld 4308  
P 61 7 3371 6677  
F 61 7 3371 6196  
E g.tyquin@mpn.net.au

**5940**

DRAWING NO. **SW.1.02**

REV **1**

**AS CONSTRUCTED**

REDLAND CITY COUNCIL REFERENCE No. OPW001252

COPYRIGHT. THIS DESIGN AND PLANS ARE NOT TO BE REPRODUCED OR REPRODUCED IN ANY MANNER WITHOUT THE WRITTEN PERMISSION OF MPN CONSULTING PTY LIMITED 2014